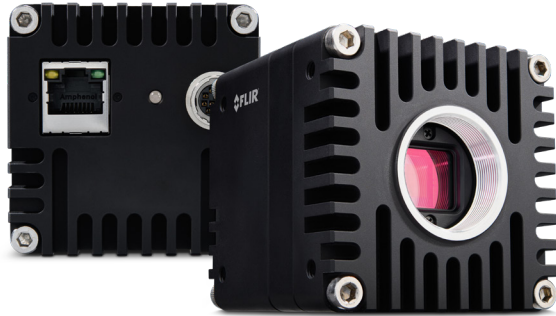




SMARTER IMAGING FOR BETTER LIVES

Perth: (08) 9242 5411 Melbourne: (03) 9384 1775 Sydney: (02) 9905 1551

Email: sales@adeptturnkey.com.au
Web site: www.adept.net.au



INDUSTRIAL/MACHINE VISION APPLICATIONS

FLIR ORYX®

P/N: ORX-10GS-89S6

ULTRA-HIGH RESOLUTION

The award winning Oryx 10GigE camera family allows systems designers to take advantage of the latest sensors by supporting transfer speeds up to 10Gbit/s enabling the capture of 4K resolution, 12-bit images at over 60FPS. Oryx's 10GBASE-T interface is a proven and widely deployed standard that provides reliable image transfer at cable lengths over 50 meters on inexpensive CAT6A, or greater than 30 m on CAT5e. On-camera features including IEEE1588 clock synchronization and full compatibility with popular third-party software supporting GigE Vision, gives system designers the tools to quickly develop innovative solutions.

www.flir.com/products/oryx-10gige

FEATURES

HIGH RESOLUTION SENSOR ON HIGH SPEED INTERFACE

Increase throughput by capturing 12.3 MP Global Shutter images at 68 FPS

RELIABILITY AND SIMPLICITY

10GBASE-T interface supports cables over 60m and makes multi-camera system set-up easy

FLEXIBILITY FOR INTEGRATORS

Develop innovative solutions quickly with GigE Vision compatibility and advanced on-camera features

APPLICATIONS

SPORTS ANALYTICS AND MOTION TRACKING

AUTOMATED OPTICAL INSPECTION

RESEARCH

LARGE VOLUME 3D SCANNING

BROADCAST + VR



SPECIFICATIONS

SPECS	ORX-10GS-89S6M-C	ORX-10GS-89S6C-C
Resolution	4096 x 2160	
Frame Rate	93 FPS	
Megapixels	8.9 MP	
Chroma	Mono	Color
Sensor	Sony IMX255, CMOS, 1"	
Readout Method	Global shutter	
Pixel Size	3.45 µm	
Lens Mount	C-mount	
ADC	8-bit, 10-bit, and 12-bit	
Minimum Frame Rate*	1 FPS	
Gain Range*	0 to 47 dB	
Exposure Range*	5 µs to 30 s	
Acquisition Modes	Continuous, Single Frame, Multi Frame	
Partial Image Modes	Pixel binning, ROI	
Image Processing	Gamma, lookup table, and sharpness	Color correction matrix, gamma, lookup table, saturation, and sharpness
Sequencer	Up to 8 sets using 2 features	
Image Buffer	240 MB	
User Sets	2 user configuration sets for custom camera settings	
Flash Memory	4 MB non-volatile memory	
Opto-isolated I/O	2 input, 2 output	
Non-isolated I/O	2 bi-directional	
Serial Port	1 (over non-isolated I/O)	
Auxiliary Output	3.3 V, 120 mA maximum	
Interface	10GigE	
Power Requirements	Externally powered over GPIO (12 - 24 V)	
Power Consumption	12.6 W maximum (12.3 W nominal)	
Dimensions/Mass	60 mm x 60 mm x 64 mm / 386 g	
Machine Vision Standard	GigE Vision	
Time Synchronization Protocol	IEEE 1588 Precision Time Protocol	
Compliance	CE, FCC, RoHS, REACH. The ECCN for this product is: EAR099.	
Temperature	Operating: 0°C to 70°C (case) Storage: -30°C to 60°C (ambient)	
Humidity	Operating: 20% to 80% (no condensation) Storage: 30% to 95% (no condensation)	
Warranty	3 years	

*Ranges are the same in binning and no binning modes.

FLIR Integrated Imaging Solutions

CANADA

12051 Riverside Way
Richmond, BC, Canada
V6W 1K7
T: +1 866.765.0827 (toll free)
T: +1 604.242.9937
F: +1 604.242.9938
E: mv-sales@flir.com

USA

T: +1 866.765.0827 (toll free)
E: mv-na-sales@flir.com

www.flir.com/mv

EUROPE

T: +49 7141 488817-0
F: +49 7141 488817-99
E: mv-eusales@flir.com

CHINA

T: +86 10 8215 9938
F: +86 10 8215 9936
E: mv-chinasales@flir.com

ASIA

E: mv-asiasales@flir.com

www.flir.com
NASDAQ: FLIR

©2020 FLIR® Integrated Imaging Solutions Inc. All rights reserved.
Names and marks appearing on the products herein are either registered trademarks or trademarks of FLIR® Systems, Inc. and/or its subsidiaries. Specifications are subject to change without notice.

VN: 20-0483-OEM-ORX-10GS-89S6-v1

FIND THE BEST ORYX
FOR YOUR NEEDS



The World's Sixth Sense®