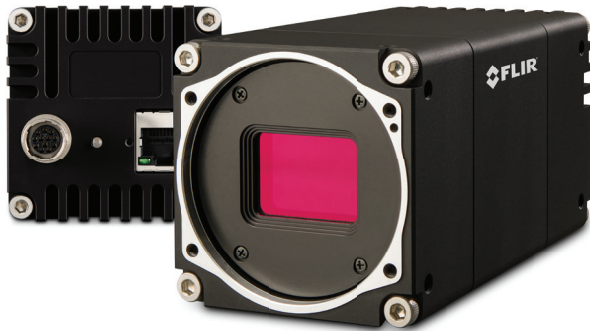




SMARTER IMAGING FOR BETTER LIVES

Perth: (08) 9242 5411 Melbourne: (03) 9384 1775 Sydney: (02) 9905 1551

Email: sales@adeptturnkey.com.au
Web site: www.adept.net.au



INDUSTRIAL/MACHINE VISION APPLICATIONS

FLIR ORYX[®]

P/N: ORX-10G-245S8

ULTRA-HIGH RESOLUTION

This Oryx model features Sony IMX530 Pregius global shutter CMOS sensor and maximizes your imaging output by delivering 24.6MP images at 44 FPS over its 10GigE interface. It is designed with flexibility in mind - with its flat front providing easy support for custom optics and/or standard F-mount lenses with an optional lens mount accessory.

www.flir.com/products/oryx-10gige

FEATURES

HIGH RESOLUTION SENSOR ON HIGH SPEED INTERFACE

Increase throughput by capturing 24.6 MP Global Shutter images at 44 FPS

RELIABILITY AND SIMPLICITY

10GBASE-T interface supports cables over 60m and makes multi-camera system set-up easy

FLEXIBILITY FOR INTEGRATORS

Develop innovative solutions quickly with GigE Vision compatibility and advanced on-camera features

APPLICATIONS

SPORTS ANALYTICS AND MOTION TRACKING

AUTOMATED OPTICAL INSPECTION

RESEARCH

LARGE VOLUME 3D SCANNING



GEN<i>i>CAM IEEE 1588



SPECIFICATIONS

SPECS	ORX-10G-245S8M	ORX-10G-245S8C
Resolution	5320 x 4600	
Frame Rate	44 FPS	
Megapixels	24.6 MP	
Chroma	Mono	Color
Sensor	Sony IMX530, CMOS, 1.2"	
Readout Method	Global shutter	
Pixel Size	2.74 µm	
Lens Mount	Sold separately	
ADC	12-bit	
Minimum Frame Rate*	1 FPS	
Gain Range*	0 to 48 dB	
Exposure Range*	7 µs to 30 s	
Acquisition Modes	Continuous, Single Frame, Multi Frame	
Partial Image Modes	Pixel binning, decimation, ROI	
Image Processing	Gamma, lookup table, and sharpness	Color correction matrix, gamma, lookup table, saturation, and sharpness
Sequencer	Up to 8 sets using 2 features	
Image Buffer	240 MB, maximum 1 image	
User Sets	2 user configuration sets for custom camera settings	
Flash Memory	4 MB non-volatile memory	
Opto-isolated I/O	2 input, 2 output	
Non-isolated I/O	2 bi-directional	
Serial Port	1 (over non-isolated I/O)	
Auxiliary Output	3.3 V, 120 mA maximum	
Interface	10GigE	
Power Requirements	Externally powered over GPIO (12 - 24 V)	
Power Consumption	13.8 W maximum (13.4 W nominal)	
Dimensions/Mass	60 mm x 60 mm x 115 mm / 508 g	
Machine Vision Standard	GigE Vision	
Time Synchronization Protocol	IEEE 1588 Precision Time Protocol	
Compliance	CE, FCC, KCC, RoHS, REACH. The ECCN for this product is: EAR099.	
Temperature	Operating: 0°C to 50°C Storage: -30°C to 60°C	
Humidity	Operating: 20% to 80% (no condensation) Storage: 30% to 95% (no condensation)	
Warranty	3 years	

*Ranges are the same in binning and no binning modes.



OPTIONAL F-MOUNT
ACC-01-5014

FLIR Integrated Imaging Solutions

CANADA

12051 Riverside Way
Richmond, BC, Canada
V6W 1K7
T: +1 866.765.0827 (toll free)
T: +1 604.242.9937
F: +1 604.242.9938
E: mv-sales@flir.com

USA

T: +1 866.765.0827 (toll free)
E: mv-na-sales@flir.com

www.flir.com/mv

EUROPE

T: +49 7141 488817-0
F: +49 7141 488817-99
E: mv-eusales@flir.com

CHINA

T: +86 10 8215 9938
F: +86 10 8215 9936
E: mv-chinasales@flir.com

ASIA

E: mv-asiasales@flir.com

www.flir.com
NASDAQ: FLIR

©2020 FLIR® Integrated Imaging Solutions Inc. All rights reserved.
Names and marks appearing on the products herein are either registered trademarks or trademarks of FLIR® Systems, Inc. and/or its subsidiaries. Specifications are subject to change without notice.
Created 11/25/20

VN: ORX-10G-245S8-LTR-v1

FIND THE BEST ORYX FOR
YOUR NEEDS



The World's Sixth Sense®