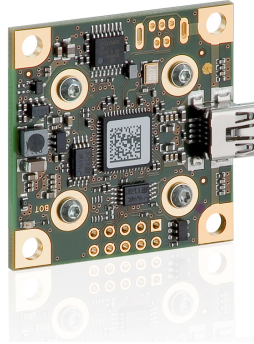
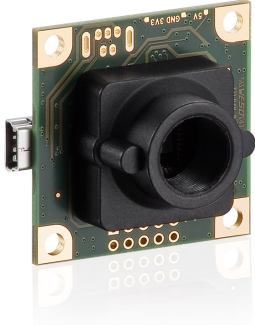


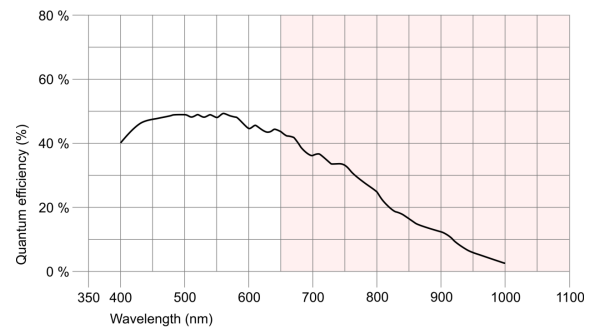
UI-1251LE-M-GL



Specification

Sensor

Sensor Technology	CMOS Mono
Manufacturer	e2v
Resolution (h x v)	1600 x 1200
Color depth (sensor)	10 bit
Color depth (camera)	8 bit
Pixel Class	2 MP
Sensor Size	1/1.8"
Shutter	Rolling shutter/Global shutter/Global start shutter
max. fps in Freerun Mode	17.6
Binning Modes	M/C automatic
Subsampling Modes	-
Sensor Model	EV76C570ABT
Pixel size	4.5 μ m
Optical Size	7.200 mm x 5.400 mm



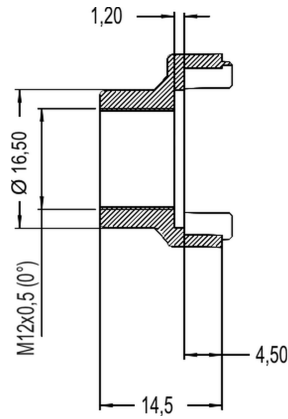
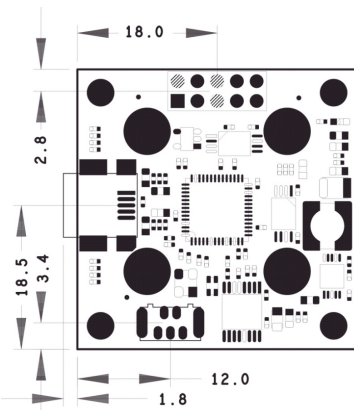
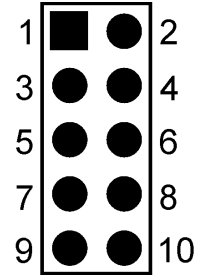
Design

Interface	USB 2
Lens Mount	M12-long
I/O In	1 x TTL
I/O Out	1 x TTL
I/O RS-232	-
I/O GPIO	2
I/O I2C	1
IP code	-
Dimensions H/W/L	36.0 mm x 36.0 mm x 20.2 mm
Mass	16 g
Power supply	USB Cable

UI-1251LE-M-GL

Pin assignment I/O connector

1	USB Power supply (VCC) 5V
2	USB Ground (GND)
3	Digital input (-)
4	Digital output (+)
5	Power supply (internal voltage transformer) 3.3V
6	USB Ground (GND)
7	GPIO1
8	GPIO2
9	I2C bus clock signal
10	I2C bus data signal



UI-1251LE-M-GL

