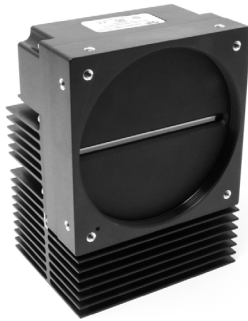


# Linea HS

16K Monochrome CMOS TDI Camera



## Advanced High-Speed, High-Sensitivity TDI Camera with Low-Cost Fiber Optic Connectors

Based on Teledyne DALSA's industry leading CMOS TDI technology, the new Linea HS™ cameras are the most advanced TDI products in the marketplace. These cameras deliver the highest performance available, with unique features that significantly improve detectability for many demanding applications. The cameras come with the next-generation CLHS interface, delivering up to 2.4 Gigapixels per second over two fiber optic cable (with error correction).

### Specifications

Resolution	16,384 x 128 pixels (16K)
Line Rate	150 kHz maximum
Pixel Size	5 $\mu\text{m}$ x 5 $\mu\text{m}$
Data Format	8 or 12 bits, selectable
Output	Monochrome
Lens Mount	M90 x 1 (16K)
Responsivity	See graph
Dynamic Range	70 dB
Nominal Gain Range	1x to 10x
Size	97 mm x 140.5 mm x 78.6 mm (16K)
Mass	< 500 g (8K) and 1.2 kg (16K)
Operating Temp	0 °C to +65 °C (front plate)
Power	+12 V to +24 V DC, Hirose 12-pin
Power Dissipation	21W @ 25C
Control & Data	Camera Link HS, LC
GPIO	Direction and line control
Regulatory Compliance	CE, FCC, and RoHS

### Key Features

- High speed: up to 150 kHz
- High sensitivity
- Up to 100 m optical cable length
- Active pixel assisted alignment marks

### Programmability

- Multiple regions and areas of interest
- 8 or 12 bit output
- Flat field and lens shading correction
- Programmable coefficient sets
- GenICam™ compliant interfacing
- Rapid coefficient changes

### Typical Applications

- Flat panel inspection
- Digital pathology
- Printed circuit board inspection



Part of the Teledyne Imaging Group

Linea HS Camera Models				
Part Number	Resolution	Max Line Rates	Pixel Size	Output
HL-FM-16K15H-00-R	16,384 x 128	150 kHz	5 $\mu\text{m}$ x 5 $\mu\text{m}$	Monochrome

