



Allied Vision



SMARTER IMAGING FOR BETTER LIVES

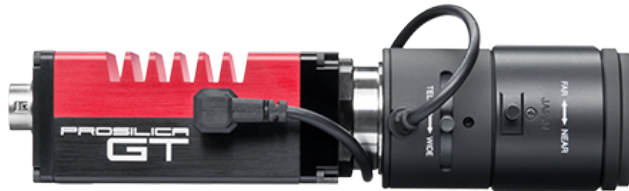
Perth: +61 (08) 9242 5411 Sydney: +61 (02) 9905 5551  
Melbourne: +61 (03) 9384 1775

Email: sales@adeptturnkey.com.au  
Web site: www.adept.net.au



# Prosilica GT

## 2750



- Versatile temperature range for extreme environments
- PTP
- PoE
- P-Iris and DC-Iris lens control

## Description

### 6 Megapixel CCD camera for extreme environments - EXview sensor

Prosilica GT2750 is a 6 Megapixel camera with a Gigabit Ethernet interface (GigE Vision®). GT2750 incorporates Sony ICX694 CCD sensor that provides high sensitivity, near IR response, low noise, anti-blooming, and excellent image quality. GT2750 is a rugged camera designed to operate in extreme environments and fluctuating lighting conditions. It offers Precise iris lens control allowing users to fix the aperture size to optimize depth of field, exposure and gain without the need for additional control elements.

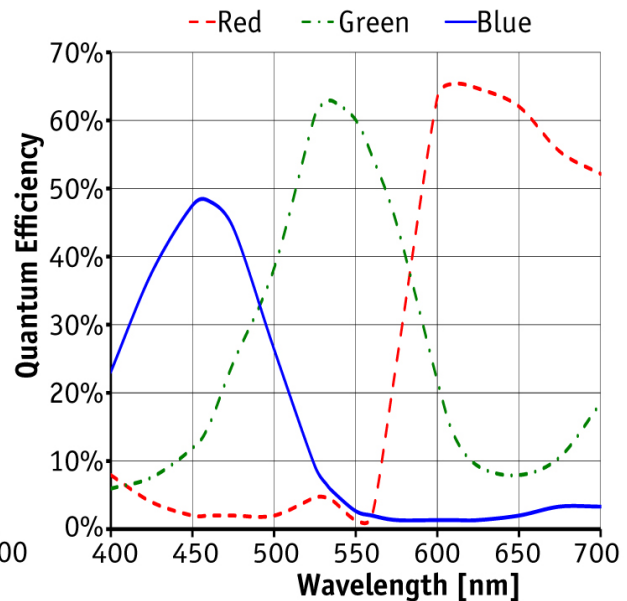
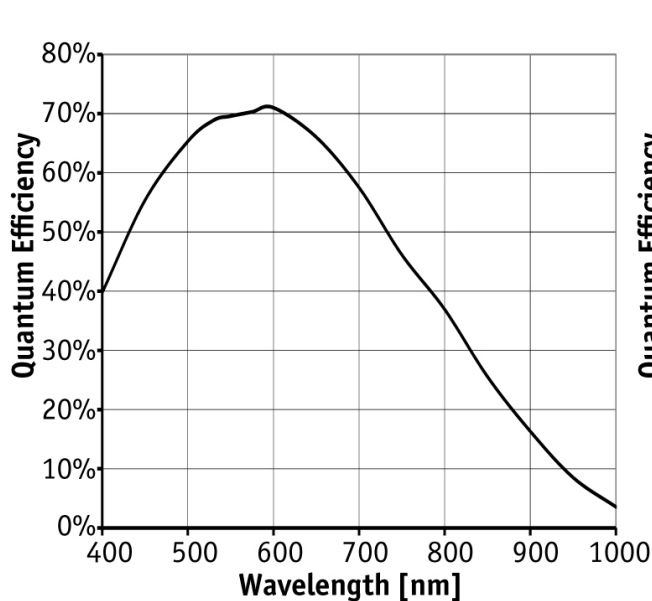
Options:

- Various IR cut/pass filters and lens mounts

## Specifications

Prosilica GT	2750
Interface	IEEE 802.3 1000BASE-T, IEEE 802.3af (PoE)
Resolution	2750 × 2200
Sensor	Sony ICX694
Sensor type	CCD Progressive
Sensor size	Type 1
Cell size	4.54 μm
Lens mount	C (adjustable)
Max frame rate at full resolution	19.8 fps
ADC	14 bit
On-board FIFO	128 Mbyte
<b>Output</b>	
Bit depth	14 (mono) - 12 (color) bit
Mono modes	Mono8, Mono12, Mono12Packed, Mono14

<b>Prosilica GT</b>	<b>2750</b>
Color modes YUV	YUV411Packed, YUV422Packed, YUV444Packed
Color modes RGB	RGB8Packed, BGR8Packed, RGBA8Packed, BGRA8Packed
Raw modes	BayerGR8, BayerGR12, BayerGR12Packed
<b>General purpose inputs/outputs (GPIOs)</b>	
TTL I/Os	1
Opto-isolated I/Os	1 input, 2 outputs
RS-232	1
<b>Operating conditions/dimensions</b>	
Operating temperature	-20°C ... +60°C
Power requirements (DC)	PoE, or 7-25 VDC
Power consumption (@12 V)	6.6 W (PoE) / 5.4 W @12 VDC
Mass	224 g
Body dimensions (L × W × H in mm)	92 × 53.3 × 33 (including connectors, w/o tripod and lens)
Regulations	CE, FCC Class A, RoHS (2011/65/EU)



## Features

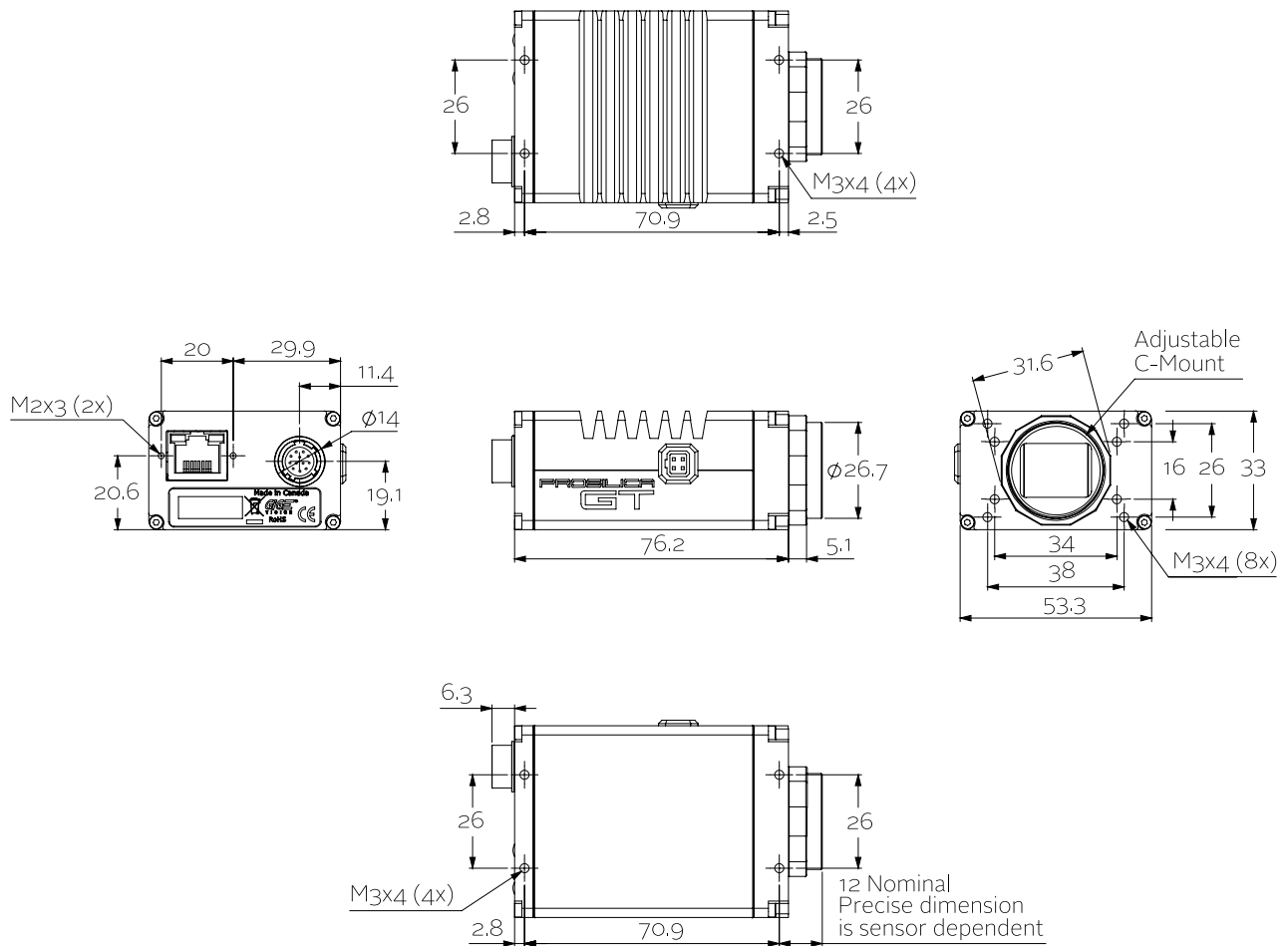
Prosilica GT2750 features include:

- Precision Time Protocol (IEEE 1588)
- Camera and sensor temperature monitoring



- Auto iris (P-Iris and DC-Iris)
- ROI, separate ROI for auto features
- Binning
- Auto gain (manual gain control: 0 to 32 dB)
- Auto exposure (manual exposure control: 10  $\mu$ s to 26.8 s)
- Auto white balance
- Gamma
- Hue, saturation, color correction
- StreamBytesPerSecond (easy bandwidth control)
- Stream hold
- Sync out modes: Trigger ready, input, exposing, readout, imaging, strobe, GPO
- Event channel
- Chunk data
- Storable user sets

## Technical drawing



## Applications

Prosilica GT2750 is ideal for a wide range of applications including:



- Outdoor imaging
- Traffic imaging / ITS
- Public security and surveillance
- Industrial inspection
- Machine vision
- Military and space applications