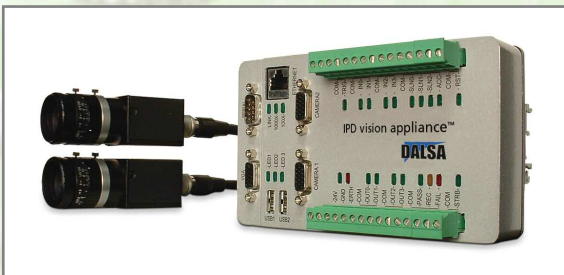


iNspect™

a machine vision solution in **15** minutes...

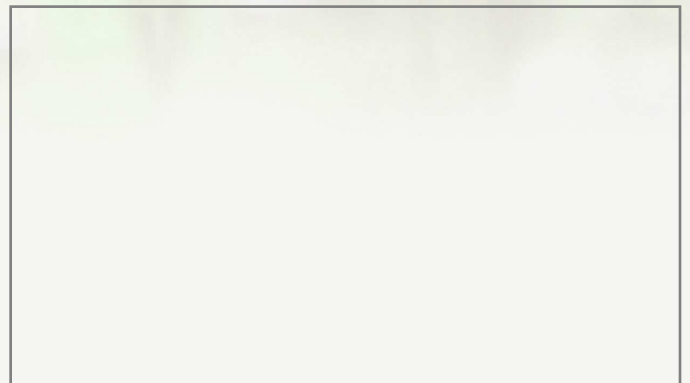
15

minutes...



www.goipd.com

Locally represented by:



DALSA

what can iNspec do?

Coined by the term "Vision Appliance", this simplistic, but powerful application, allows you to setup and deploy a quality inspection system in a matter of minutes. No programming or extensive training is required. The underlying tools have been carefully crafted to address the inspection needs from a wide range of industries, including Automotive, Packaging and Pharmaceutical. Deployable on a hardware solution of your choice, iNspec makes the benefits of machine vision available to all manufacturers.

why do you need iNspec?

iNspec is a quality assurance product that allows you to identify and correct problems before your customers find them. This quick return on investment will reduce production costs, increase productivity and assure customer satisfaction.

what tools do

Positioning

Advanced pattern finders
changes in part orientation

Measurement

Accurately measures dista
and thickness of pipes, ar
to real world coordinate tr

Code/Text Readers

Reads and verifies popula
identifies printed, molded

Flaw Detection

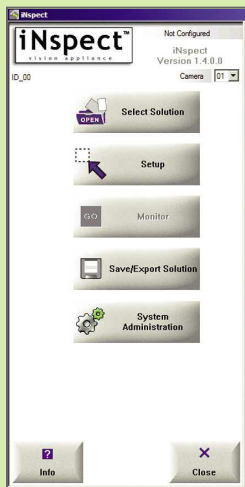
Verifies the number and s
matches objects against t

setup in **5** easy steps...

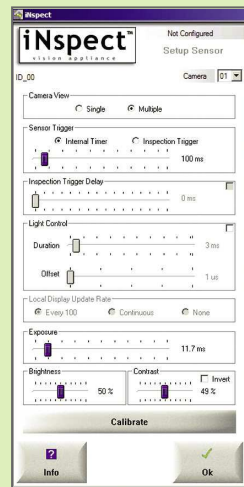
Connect to System

- a) Remote: Using standard internet browser OR
- b) Local: Using keyboard and mouse

No software to install anywhere using VA hardware.



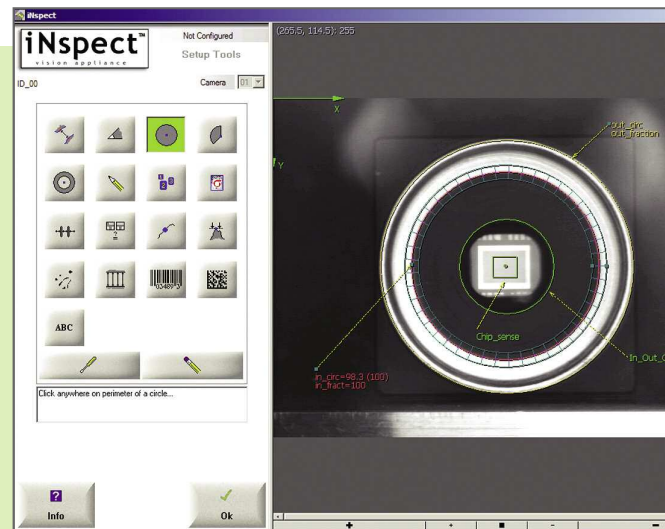
1.



Adjust Sensor

Select single or multiple cameras, adjust trigger to picture delay, set light off-set and duration, adjust sensor exposure.

2.



Apply Tools

Tools are easily applied on the object image. Useful information content is automatically extracted.

3.

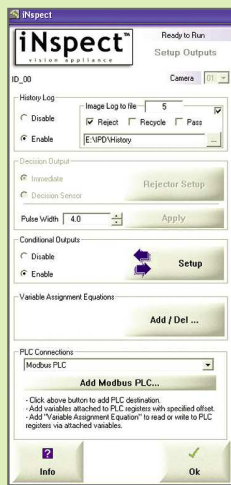
I get?

for object alignment and robot guidance. Tolerant to lighting variation and n.

ance between points or lines, diameter and circularity of holes, concentricity c radius and angle. Calibration corrects for optical distortion and provides pixel transform.

or 1D barcodes. Reads, verifies and grades 2D matrix symbologies. Reads and or stamped text (OCR).

ize of objects, counts edge transitions along straight lines, circles and polylines, trained patterns, detects the presence or absence of objects and surface flaws.



Setup Communications

Communicate information to network or 3rd party devices, control external redirection equipment, log history.

4.

START INSPECTING!

Run the application. Solution files can be saved and loaded on power-up, or selected via external inputs. Progress can be monitored locally or remotely via the network connection.



5.

what hardware do I need?

Low cost, entry-level solution for up to 2 cameras. Simply "connect and go" using Ethernet or keyboard, mouse and display.



MODEL: VA20/21

Performance solution with multiple camera interfaces. Supports a wide variety of configurations and resolutions.



MODEL: VA40/41

what camera can I use?

Standard
640x480

Hi-Res
1024x768

Megapixel
1375x1035

product features

- Software**
 - Easy to upgrade as FREE updates become available. Resident software eliminates version control problems.
 - The VA40 supports 3rd party software packages that run on the Microsoft XP Operating System.
- Administration**
 - User account setup for access authentication.
 - Remote data and event logging for CFR Part 11 compliance.
- Solution Management**
 - Solutions can be saved locally or exported to a network drive for safe keeping or proliferation across multiple lines.
 - Dynamic solution switching using dedicated input lines or Ethernet.
- Emulator**
 - Provides the ability to prototype or build your application without interfering with your production line.
 - Employs the exact same user interface. The emulator sequences through stored images that can be acquired from the online system.
- User Access Method**
 - VA products support two user access methods.
 1. Remote using standard web browser, and;
 2. Local using Keyboard, mouse and monitor.
- Sensors (cameras)**
 - VA products support a variety of standard sensor configurations, ranging from 640x480 resolution to 1375x1035.
 - Small form factor cameras (29x29x47mm without lens) are ideal for tight-fitting applications.
- Toolset**
 - Extensive capabilities for Positioning, Measuring, Barcode and 2D Matrix reading. Text (OCR) reading and Flaw Detection.
 - Tools operate within convenient Region Of Interest (ROI) shapes such as lines, rectangles, circles, donuts and polygons.
 - Includes iLabel, an application specifically designed for inspecting labels and print on packaged goods.
- Communication**
 - VA20 is equipped with a web server for access via an Internet browser.
 - Several Ethernet and Serial protocols are supported for communication of inspection results, including Ethernet/IP and Modbus. Direct support for several PLCs is also available.
 - Data logging direct to Excel spreadsheet.
 - Latest inspection results and images are saved on the device for viewing or fine tuning your solution.
- Operator Interface**
 - Custom operator interfaces can be developed using the iInspect Visual Basic API. This eliminates language barriers and allows users to expose only key controls to the production floor.

To learn more about iInspect, see our website at www.goipd.com/products/appliances



IPD Headquarters • 700 Technology Park Drive • Billerica, MA • 01821
Email: info@goipd.com • Tel: +1 978.670.2002 • Fax: +1 978.670.2010

PART NO. VA-INS-M-100U REVISION 04/07
Copyright © 2007 DALSA. All rights reserved.